

NE LINCOLNSHIRE JSNA INDICATOR SUMMARY

TITLE:	4.14 Hip Fractures
---------------	---------------------------

SUBTITLE:	4.14i - Hip fractures in people aged 65 and over 4.14ii - Hip fractures in people aged 65 and over - aged 65-79 4.14iii - Hip fractures in people aged 65 and over - aged 80+
------------------	--

Domain:	Preventing Premature Mortality
----------------	---------------------------------------

Frequency of Availability:	Annual
-----------------------------------	---------------

Time Period Of Data Analysis:	2013/14
--------------------------------------	----------------

AVAILABLE COMPARISONS

TYPE	AVAILABLE
National, Regional or Peer Group	Yes
Electoral Ward / NELCCG Practice	No
Neighbourhood	No
Socioeconomic Differences	No
Targets, Trends & Projections	Yes

KEY POINTS

+VE With a rate of 552.2/100,000 North East Lincolnshire ranks 5th lowest in the Yorkshire and Humber region for hip fractures in those aged 65 and over.

-- North East Lincolnshire ranks 7th highest out of 15 local authorities in the Yorkshire and Humber region for hip fractures in those aged 65 to 79.

-- People aged 80 and over are at particularly high risk of hip fractures and so rates in this age group are far higher than for any other.

-VE North East Lincolnshire ranks 5th highest in the Yorkshire and Humber region for people aged 80+.

-VE Females are statistically significantly more likely to have a hip fracture than males of the same age.

DESCRIPTION

Hip fracture is a debilitating condition; only one in three sufferers return to their former levels of independence and one in three ends up leaving their own home and moving to long-term care . Hip fractures are almost as common and costly as strokes and the incidence is rising. In the UK, about 75000 hip fractures occur annually at an estimated health and social cost of about £2 billion a year. The incidence is projected to increase by 34% in 2020, with an associated increase in annual expenditure. The average age of a person with hip fracture is about 83 years with about 73% of fractures occurring in women. There is a high prevalence

NE LINCOLNSHIRE JSNA INDICATOR SUMMARY

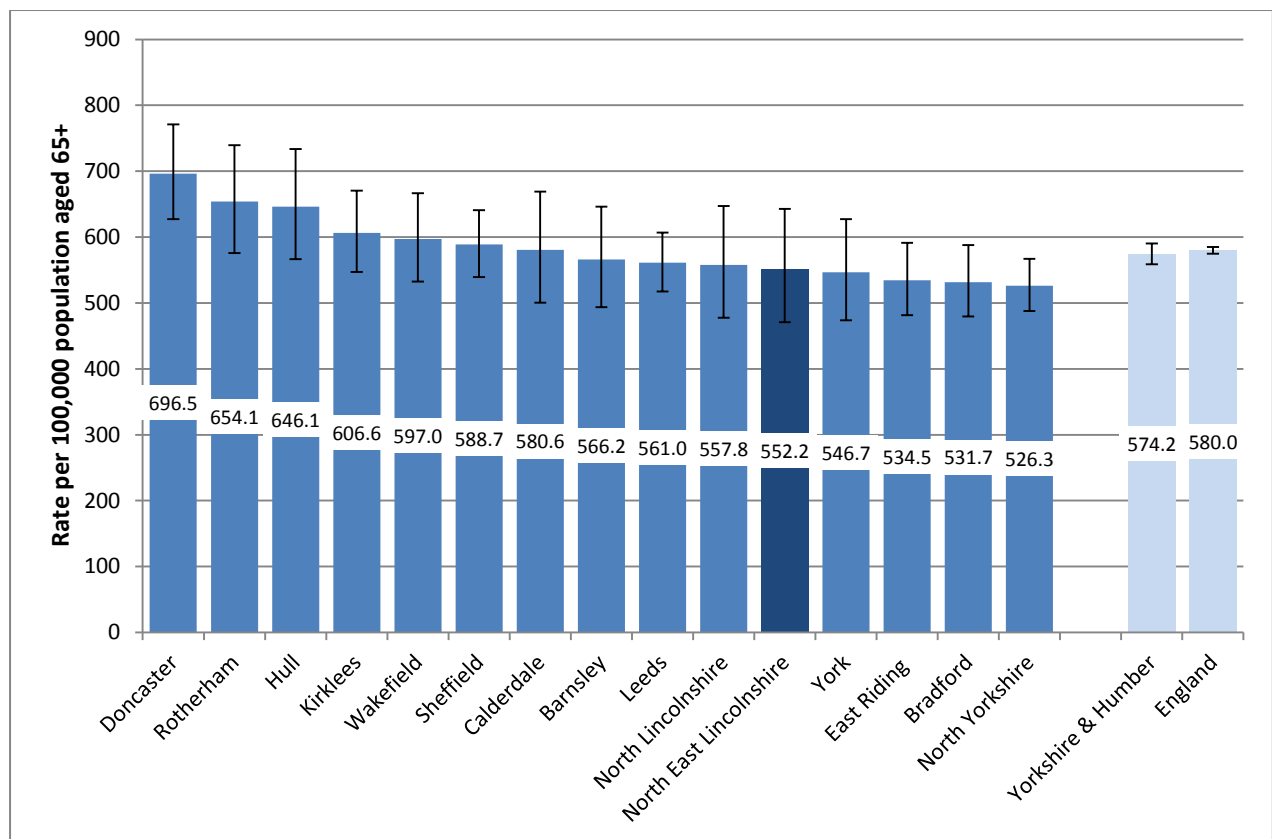
of comorbidity in people with hip fracture. The National Hip Fracture Database reports that mortality from hip fracture is high - about one in ten people with a hip fracture die within 1 month and about one in three within 12 months (Public Health Outcomes Framework).

NATIONAL & REGIONAL

4.14i - Hip fractures in people aged 65 and over

With a rate of 552.2/100,000 North East Lincolnshire ranks 5th lowest in the Yorkshire and Humber region for hip fractures in those aged 65 and over, see Figure 1. The North East Lincolnshire rate is lower than the regional rate of 574.2/100,000 and the national rate of 580.0/100,000, however the differences are not statistically significant.

Figure 1 Emergency hospital admissions for fractured neck of the femur in persons aged 65 and over, DSR per 100,000, local authorities in the Yorkshire and Humber region, 2013/14



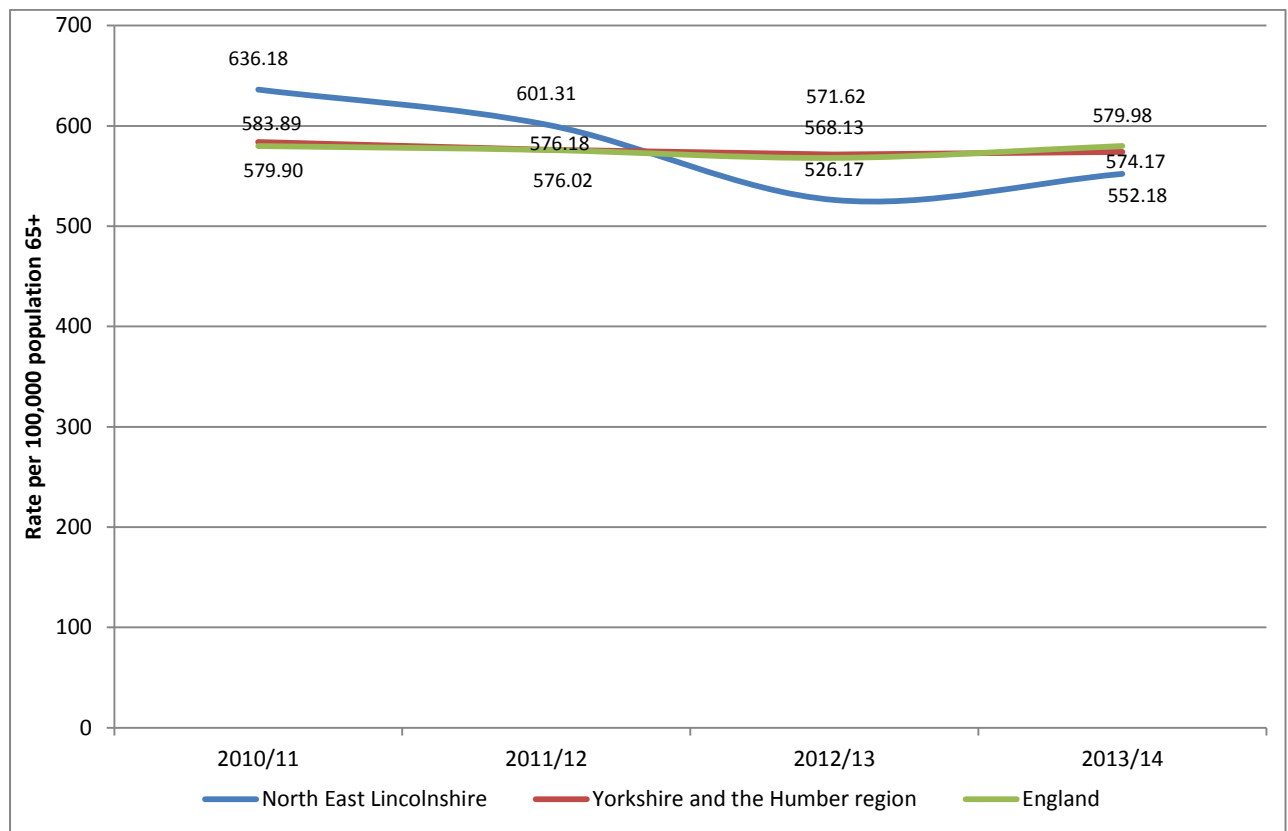
Source: Public Health England

NE LINCOLNSHIRE JSNA INDICATOR SUMMARY

TRENDS

The national and regional trend for hip fractures in the 65 and overs has remained fairly constant over the time period shown in Figure 2, the North East Lincolnshire rate has fluctuated, however this is due to the comparatively small numbers. The North East Lincolnshire rate has decreased from 636.18/100,000 above the national average in 2010/11 to 552.18/100,000, below the national average in 2013/14. Despite the decrease locally, the difference is not statistically significant.

Figure 2 Emergency hospital admissions for fractured neck of the femur in persons aged 65 and over, DSR per 100,000, trend for North East Lincolnshire, Yorkshire and Humber and England



Source: Public Health England

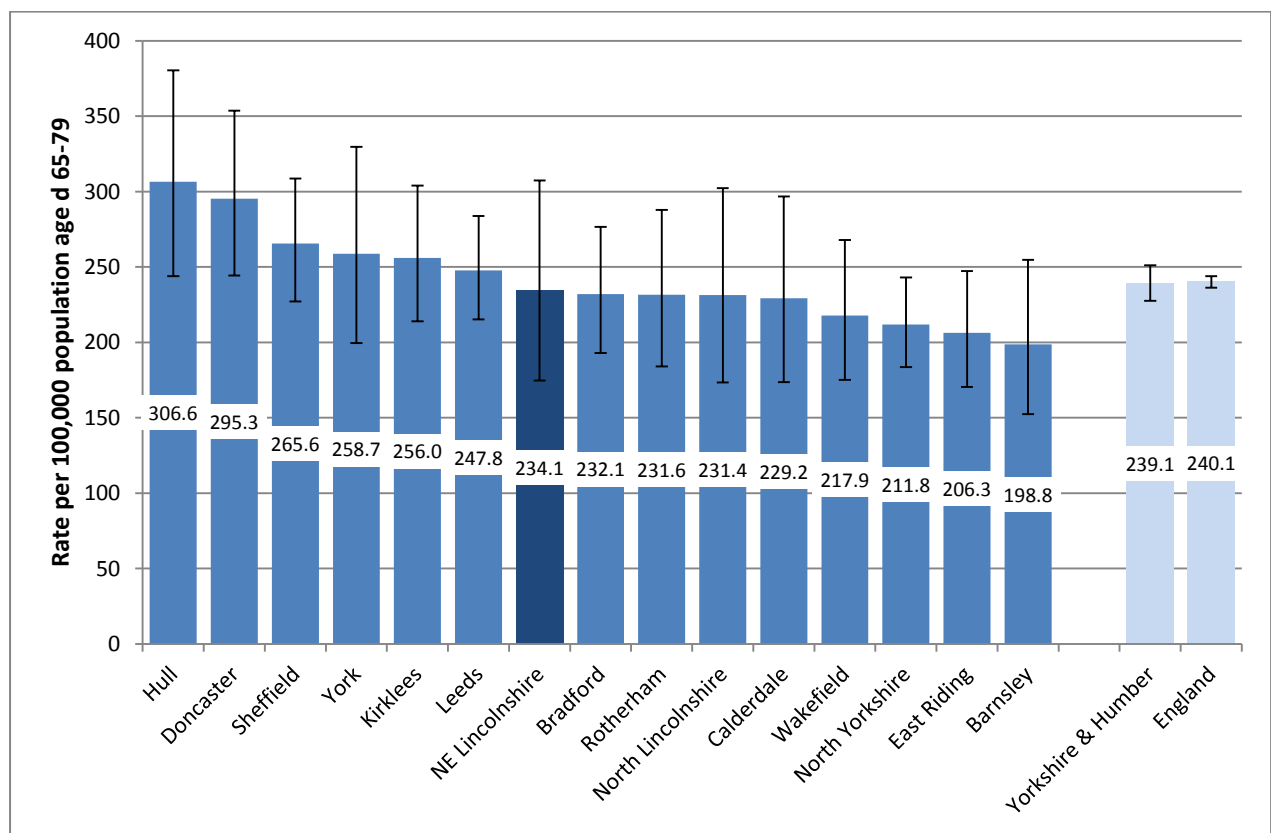
NE LINCOLNSHIRE JSNA INDICATOR SUMMARY

4.14ii - Hip fractures in people aged 65 and over - aged 65-79

NATIONAL & REGIONAL

North East Lincolnshire ranks 7th highest out of 15 local authorities in the Yorkshire and Humber region for hip fractures in those aged 65 to 79. With a rate of 234.1/100,000 North East Lincolnshire has a slightly lower rate than the Yorkshire and Humber (239.1/100,000) and England (240.1/100,000), although the differences are not statistically significant, see Figure 3.

Figure 3 Emergency hospital admissions for fractured neck of femur in persons aged 65 to 79, DSR per 100,000, local authorities in the Yorkshire and Humber region, 2013/14



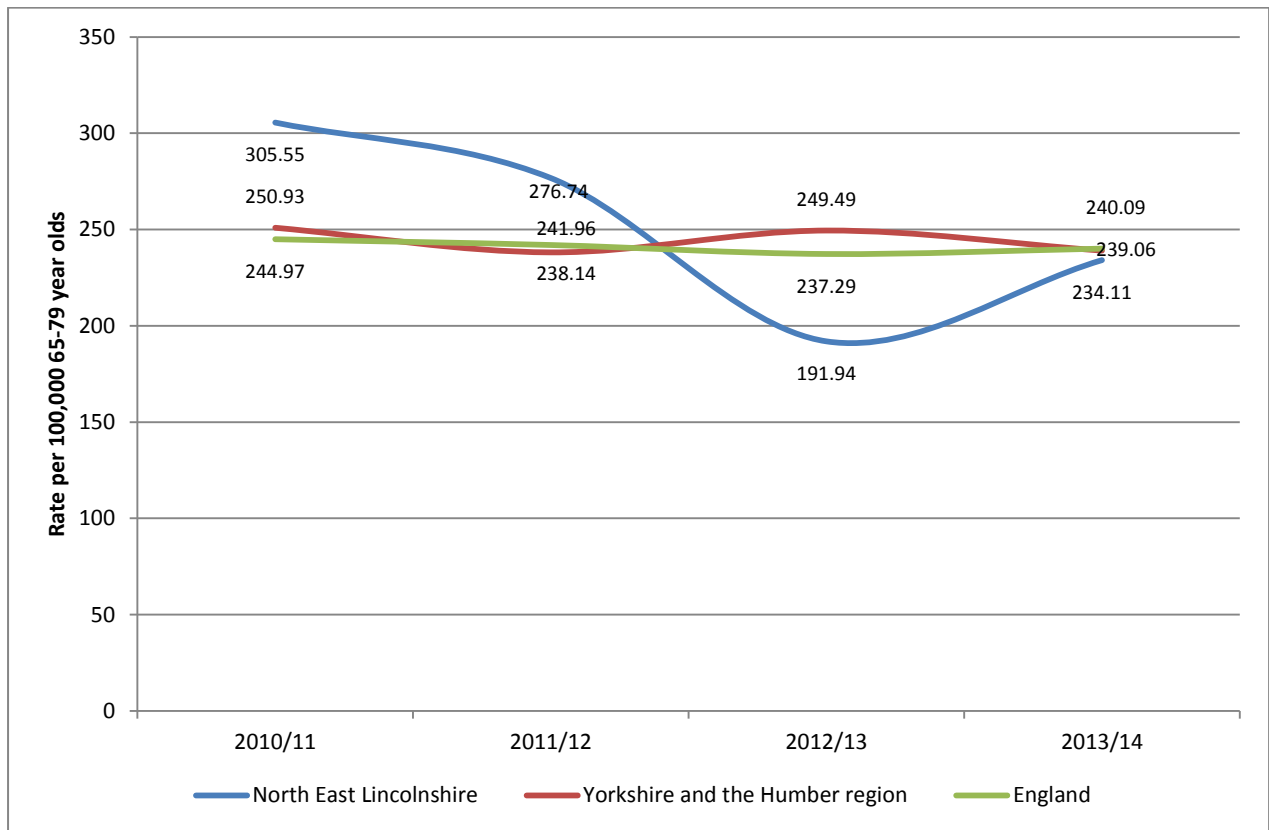
Source: Public Health England

NE LINCOLNSHIRE JSNA INDICATOR SUMMARY

TRENDS

Locally the rate for hip fractures in people aged 65 to 79 has fluctuated in the time period shown in Figure 4, whilst the national and regional rates have remained fairly steady, the local fluctuation reflects the relatively small numbers.

Figure 4 Emergency hospital admissions for fractured neck of femur in persons aged 65 to 79, DSR per 100,000, trend in North East Lincolnshire, Yorkshire and Humber and England.



Source: Public Health England

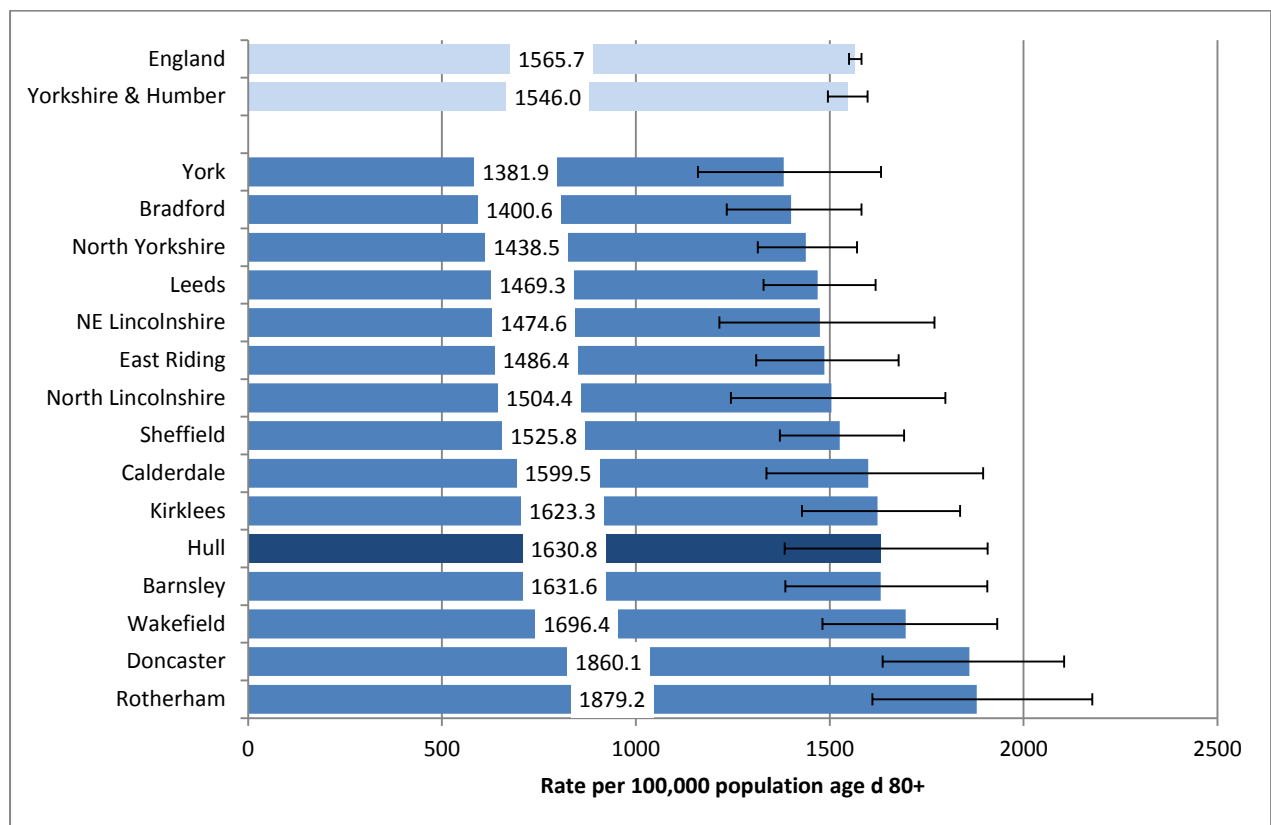
NE LINCOLNSHIRE JSNA INDICATOR SUMMARY

4.14iii - Hip fractures in people aged 65 and over - aged 80+

NATIONAL & REGIONAL

People aged 80 and over are at particularly high risk of hip fractures and so rates in this age group are far higher than for any other. North East Lincolnshire ranks 5th highest in the Yorkshire and Humber region . With a rate of 1630.8/100,000, North East Lincolnshire is higher than the regional average of 1546.0/100,000 and the national average of 1565.7/100,000, however the differences are not statistically significant, see Figure 5.

Figure 5 Emergency hospital admissions for fractured neck of femur in persons aged 80 and over, DSR per 100,000, local authorities in the Yorkshire and Humber region, 2013/14



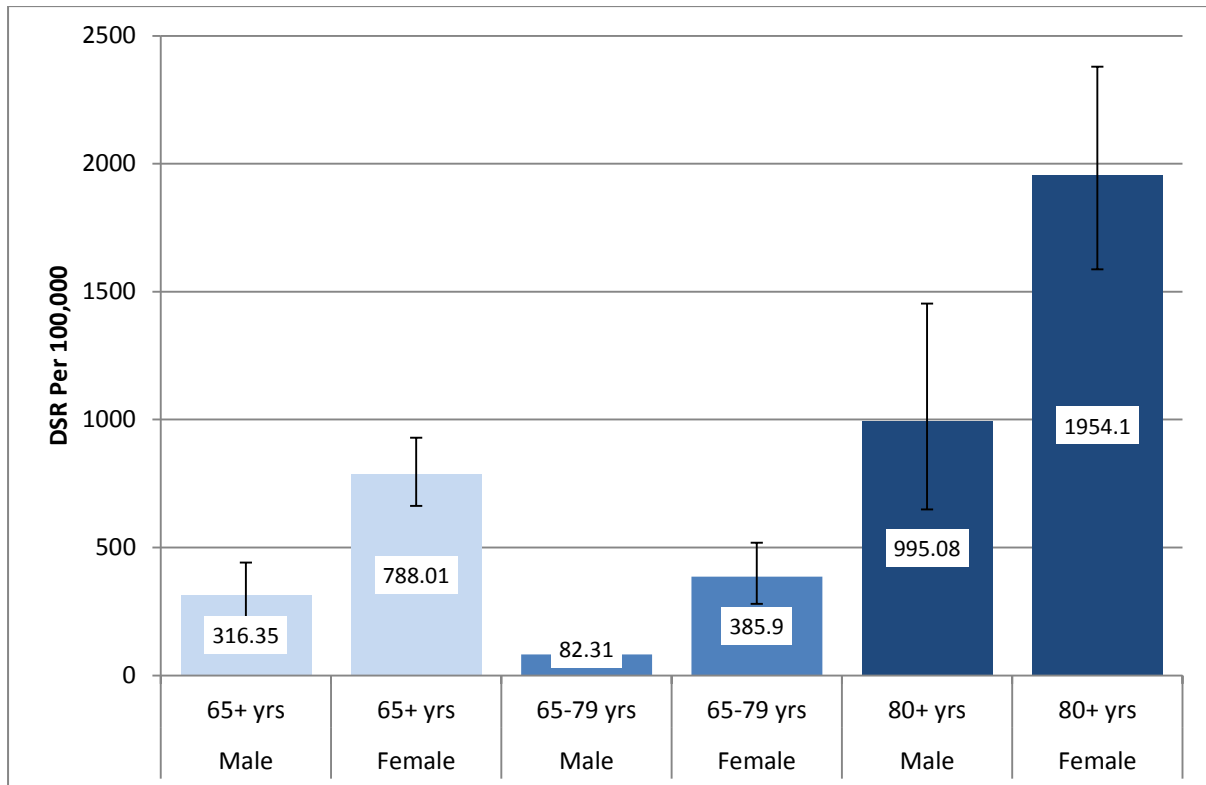
Source: Public Health England

NE LINCOLNSHIRE JSNA INDICATOR SUMMARY

MALE AND FEMALE COMPARISON

Older females are at particularly high risk of hip fractures compared to males, Figure 6 shows the rate comparisons in North East Lincolnshire between males and females by different age bands. In each age band in Figure 6 females are statistically significantly more likely to have a hip fracture than males of the same age.

Figure 6 Emergency hospital admissions for fractured neck of femur in persons aged 65 and over, DSR per 100,000, North East Lincolnshire, male and female comparison by age-band



Source: Public Health England

Public Data Sources:	http://fingertips.phe.org.uk/
-----------------------------	---