

NE LINCOLNSHIRE JSNA INDICATOR SUMMARY

TITLE:	4.10 Suicide Rate
---------------	--------------------------

SUBTITLE:	4.10 Age-standardised mortality rate from suicide and injury of undetermined intent per 100,000 population
------------------	---

Domain:	Healthcare Public Health and Preventing Premature Mortality
----------------	--

Frequency of Availability:	Annually
-----------------------------------	-----------------

Time Period Of Data Analysis:	2001-03 to 2011-13
--------------------------------------	---------------------------

AVAILABLE COMPARISONS

TYPE	AVAILABLE
National, Regional or Peer Group	Yes
Electoral Ward / NELCCG Practice	No
Neighbourhood	No
Socioeconomic Differences	No
Targets, Trends & Projections	No

KEY POINTS

--

DESCRIPTION

Preventing suicide in England: A cross-government outcomes strategy to save lives (published September 2012) has the overall aim of reducing the suicide rate in the general population in England.

The inclusion of this indicator in the Public Health Outcomes Framework reflects the importance of sustained efforts to keep the suicide rate at or below current levels.

Rates are based on pooled data for three year period:

Numerator: Number of deaths from suicide and injury of undetermined intent (classified by underlying cause of death recorded as ICD10 codes X60-X84 (all ages) and Y10-Y34 (for ages 15 and over)) registered in the respective calendar years.

Denominator: Office for National Statistics (ONS) mid-year population estimates aggregated across three years

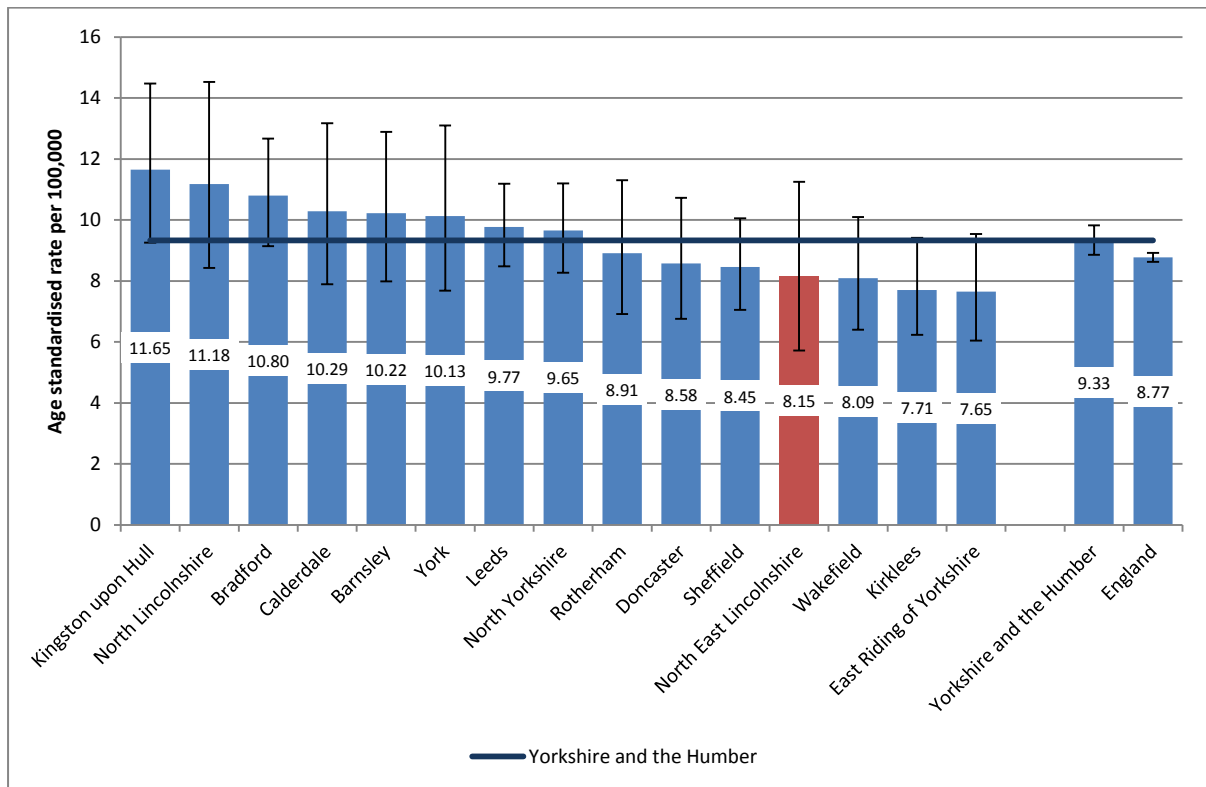
NE LINCOLNSHIRE JSNA INDICATOR SUMMARY

A five year audit of suicide case notes will be completed in 2015 which will contribute towards understanding the specific needs of those at risk of suicide in North East Lincolnshire and inform a local suicide prevention strategy.

NATIONAL, REGIONAL OR PEER GROUP

The mortality rate from suicide and injury of undetermined intent for 2011 to 2013 was 8.15 per 100,000 in North East Lincolnshire, slightly lower (but not significantly) than the national rate (8.77 per 100,000) and the regional rate (9.33 per 100,000). North East Lincolnshire is not significantly better than any of the other local authority areas in the Yorkshire and Humber region, as shown in Figure 1.

Figure 1 Age-standardised mortality rate from suicide and injury of undetermined intent per 100,000 population for Yorkshire and Humber, 2011-13

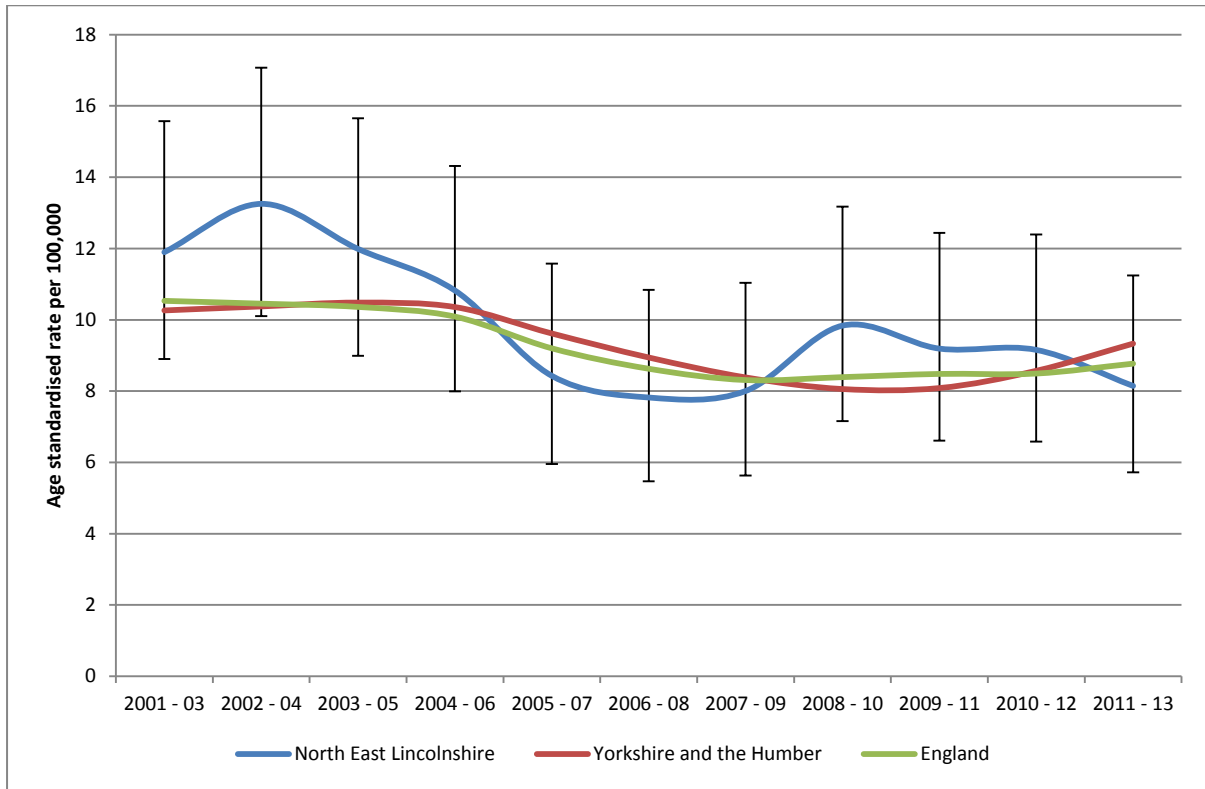


Source: PHE 2015

The trend for suicide mortality in North East Lincolnshire has reduced from 11.9 per 100,000 in 2001-03 to 8.15 per 100,000 in 2011-13 with a rate that has fluctuated above and below the national and regional decreasing trend in suicide mortality. However, nationally and regionally there has been a slight increase in the suicide rates whereas North East Lincolnshire appears to be following a general downward trend for 2011-13 (Figure 2). It should be noted that the number of suicide incidents in North East Lincolnshire is relatively small and any variations year by year can significantly affect suicide rates locally.

Figure 2 Age-standardised mortality rate from suicide and injury of undetermined intent per 100,000 population for North East Lincolnshire, Yorkshire and Humber and England, 2001-03 to 2011-13

NE LINCOLNSHIRE JSNA INDICATOR SUMMARY



Source: PHE 2015

Public Data Sources:	<i>Public Health England</i>
-----------------------------	------------------------------