

# NE LINCOLNSHIRE JSNA INDICATOR SUMMARY

<b>TITLE:</b>	<b>4.4 UNDER 75 MORTALITY RATE FROM CARDIOVASCULAR DISEASES (INCLUDING HEARTH DISEASE AND STROKE)</b>
---------------	---

<b>SUBTITLE:</b>	<p><b>4.4i Age-standardised rate of mortality from all cardiovascular diseases (including heart disease and stroke) in persons less than 75 years of age per 100,000 population</b></p> <p><b>4.4ii Age-standardised rate of mortality that is considered preventable from all cardiovascular diseases (including heart disease and stroke) in persons less than 75 years of age per 100,000 population</b></p>
------------------	---

<b>Domain:</b>	<b>Preventing Premature Mortality</b>
----------------	---------------------------------------

<b>Frequency of Availability:</b>	<b>Annual</b>
-----------------------------------	---------------

<b>Time Period Of Data Analysis:</b>	<b>Regional 2011-13 3 years pooled Local 2010-2014 5 years pooled</b>
--------------------------------------	---

## AVAILABLE COMPARISONS

TYPE	AVAILABLE
National, Regional or Peer Group	Yes
Electoral Ward / NELCCG Practice	Yes
Neighbourhood	No
Socioeconomic Differences	No
Targets, Trends & Projections	Yes

## KEY POINTS

**-VE** NEL has a statistically significantly higher rate than England for premature CVD mortality for all causes and causes considered preventable.

**-VE** East Marsh ward has a statistically significantly higher U75 CVD mortality rate than 12 out of 14 remaining wards in NEL for all CVD and 13 out of 14 wards for causes considered preventable.

**+VE** The premature mortality rate from CVD has declined locally for all causes and preventable causes.

**+VE** NEL now has a statistically significantly lower rate than in 2007-2009 and the 3 year pooled time periods previous to this for all premature CVD mortality.

# NE LINCOLNSHIRE JSNA INDICATOR SUMMARY

## DESCRIPTION

Cardiovascular disease (CVD) is one of the major causes of death in under 75s in England. There have been huge gains over the past decades in terms of better treatment for CVD and improvements in lifestyle, but to ensure that there continues to be a reduction in the rate of premature mortality from CVD, there needs to be concerted action in both prevention and treatment. The inclusion of this indicator (alongside others in the Public Health and NHS Outcomes Frameworks) reinforces the Government commitment to reducing avoidable deaths through public health policy and interventions and sends out a clear signal that prevention of CVD is just as important as treatment (Public Health Outcomes Framework).

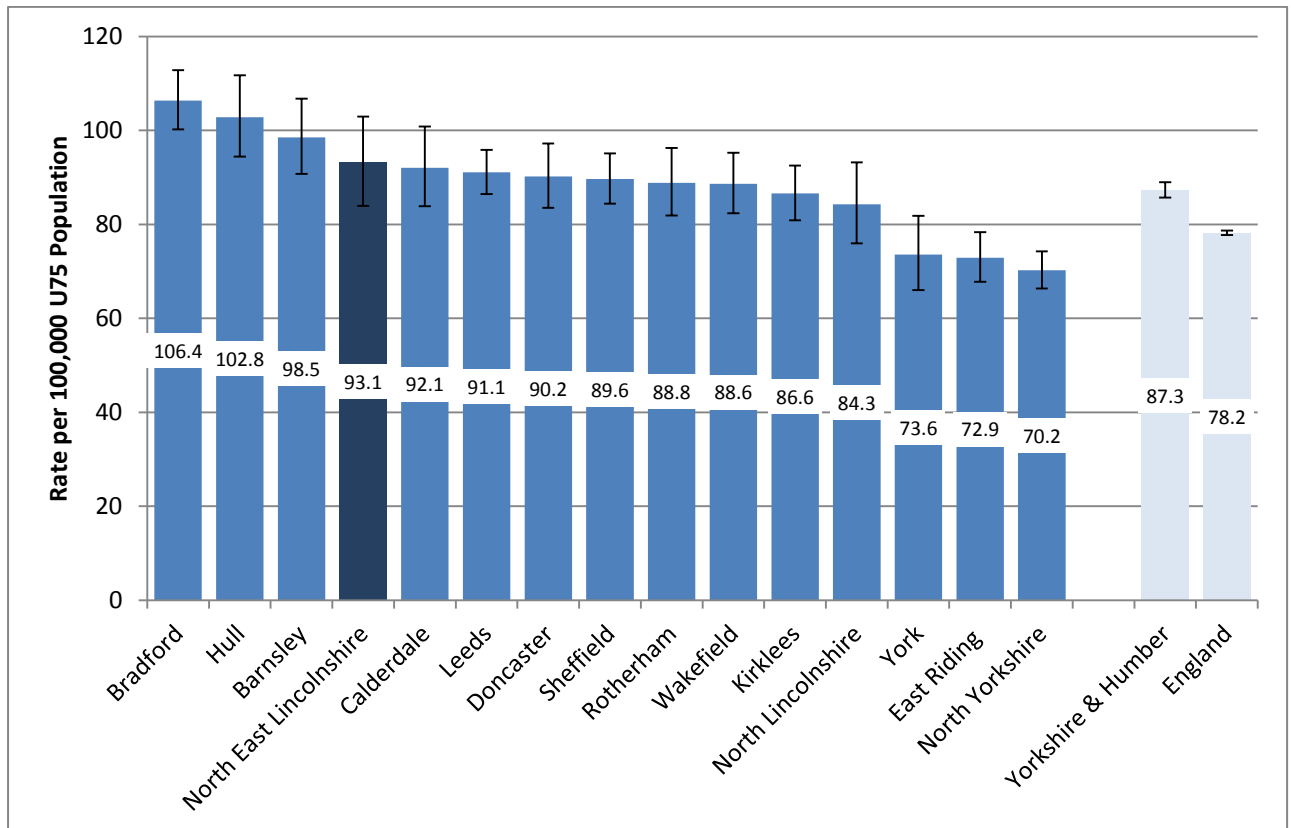
## PART I

### 4.4i Age-standardised rate of mortality from all cardiovascular diseases (including heart disease and stroke) in persons less than 75 years of age per 100,000 population

#### NATIONAL & REGIONAL

North East Lincolnshire has the fourth highest rate of premature (under 75) mortality from CVD in the Yorkshire and Humber region. With a rate of 93.1/100,000 it is higher than the Yorkshire and Humber rate of 87.3/100,000 and statistically significantly higher than the England rate of 78.2/100,000, see Figure 1.

**Figure 1** Under 75 mortality rate from all cardiovascular diseases (CVD), persons, 2011-13 (3 years pooled data), Yorkshire and Humber region.



Source: Public Health England

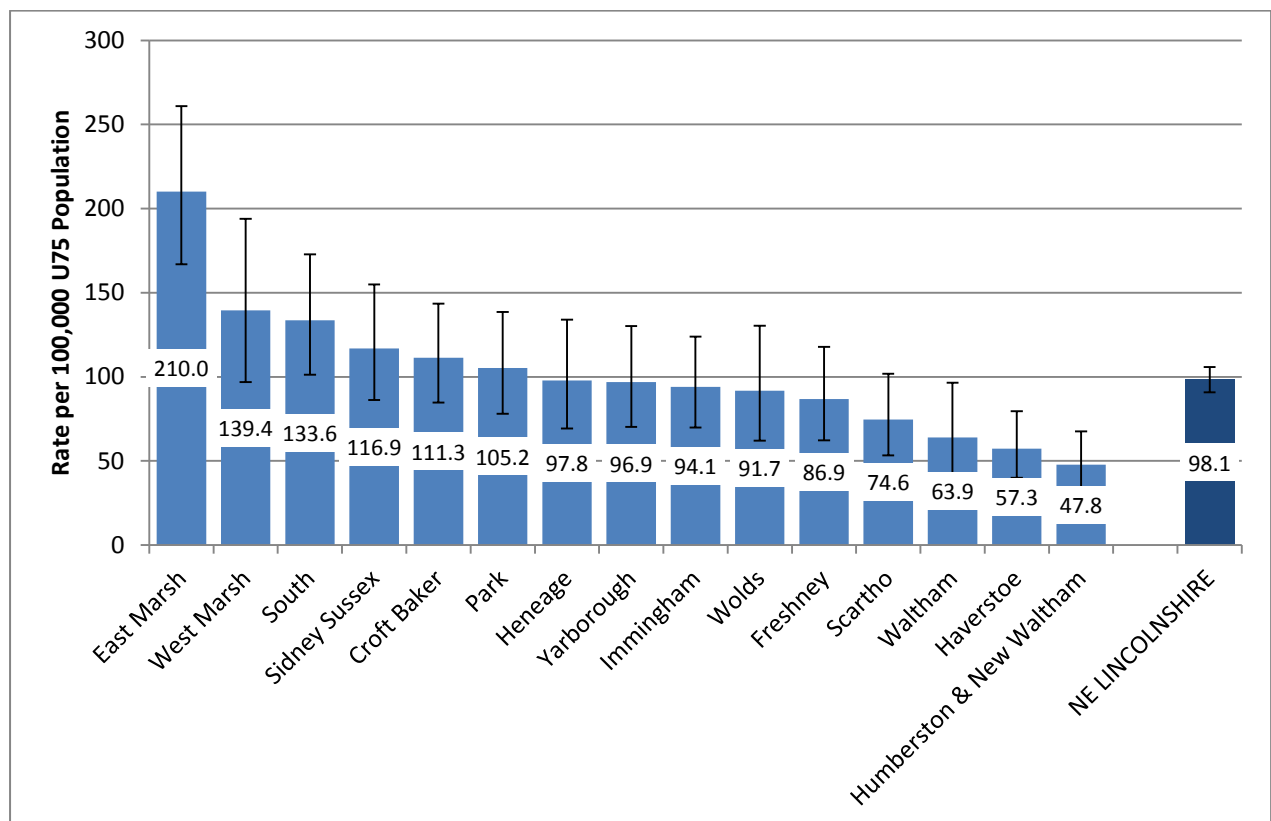
# NE LINCOLNSHIRE JSNA INDICATOR SUMMARY

## NORTH EAST LINCOLNSHIRE

### Electoral Wards

East Marsh ward has by far the highest premature mortality rate from CVD, with a rate of 210.0/100,000 it is statistically significantly higher than 12 out of the remaining 14 wards and the North East Lincolnshire rate of 98.1/100,000. The next highest rates were in West Marsh and South wards and the lowest rates were in Humberston and New Waltham and Haverstoe, both are statistically significantly lower than the North East Lincolnshire rate, see Figure 2.

**Figure 2 Under 75 mortality rate from all CVD, persons, 2010-2014 (5 years pooled), North East Lincolnshire wards**



Source: Primary Care Mortality Database (PCMD)

When ordered by IMD10 score, the higher rates are found in the most deprived wards while the lowest rates are in the least deprived wards, the 3 least deprived wards ranked in the lowest 3 whilst the 4 most deprived wards ranked in the top 4.

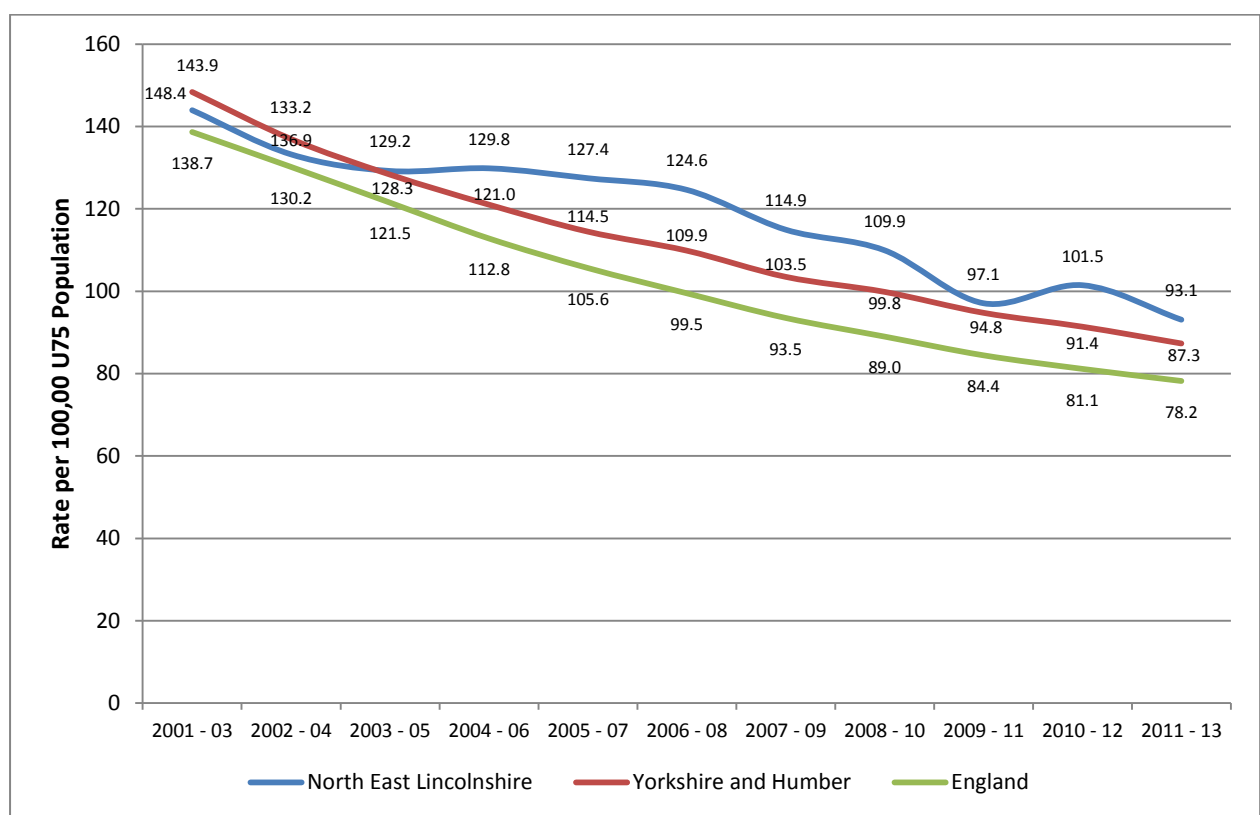
# NE LINCOLNSHIRE JSNA INDICATOR SUMMARY

## TRENDS

The premature mortality rate for persons from CVD has decreased locally, regionally and nationally since 2001-2003. Locally, rates have fluctuated more than the national and regional figures which have shown a decline year on year. However, the most recent data shows the North East Lincolnshire rate is the lowest for the time period shown in

Figure 3. The 2011-2013 rate for North East Lincolnshire is statistically significantly lower than for each time period before and including the time period of 2007-2009.

**Figure 3 Under 75 mortality from CVD, trend for England, Yorkshire and Humber and North East Lincolnshire, rate per 100,000 persons under 75, 3 years pooled**



Source: Public Health England

# NE LINCOLNSHIRE JSNA INDICATOR SUMMARY

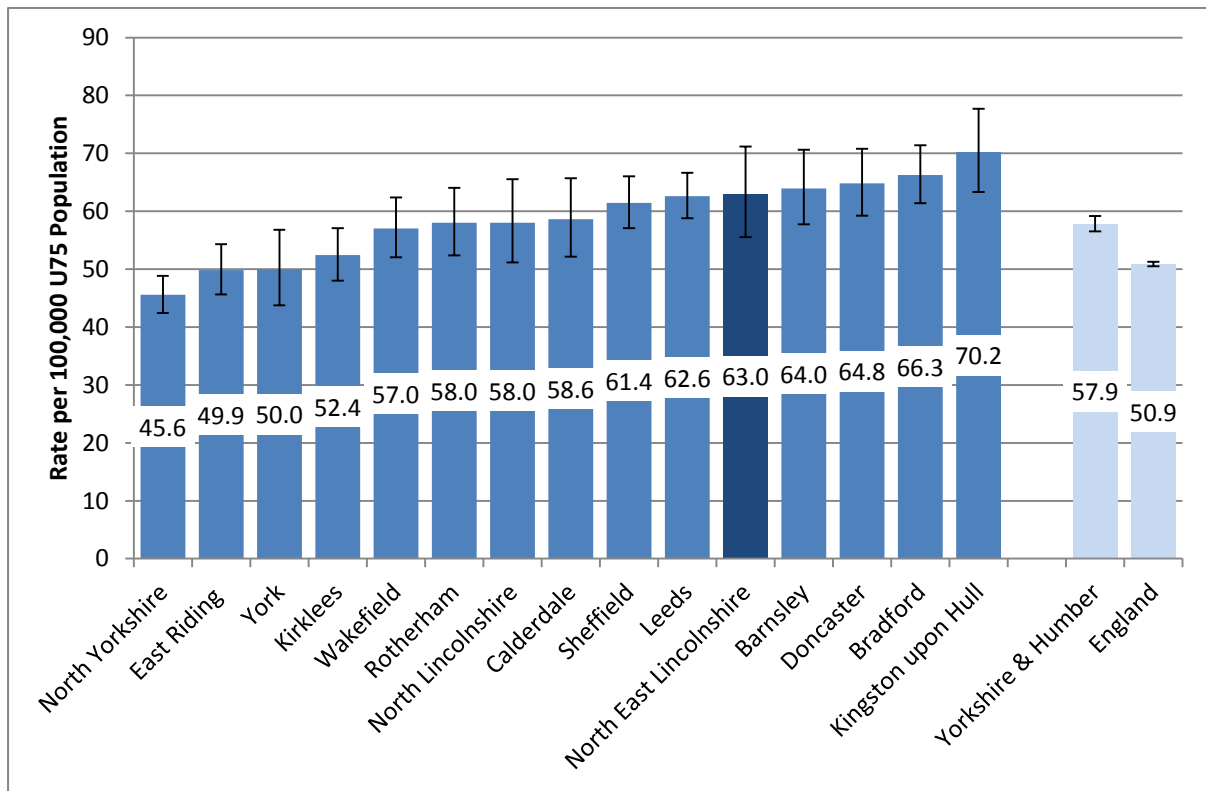
## PART II

4.4ii Age-standardised rate of mortality that is considered preventable from all cardiovascular diseases (including heart disease and stroke) in persons less than 75 years of age per 100,000 population

### NATIONAL & REGIONAL

North East Lincolnshire has the 5<sup>th</sup> highest premature mortality rate from CVD considered preventable in the Yorkshire and Humber region. With a rate of 63.0/100,000, North East Lincolnshire is higher than the regional average of 57.9/100,000 and statistically significantly higher than the England average of 50.9/100,000, see Figure 4.

**Figure 4** Under 75 mortality rate from CVD considered preventable, persons, 2011-13 (3 years pooled data), Yorkshire and Humber region.



Source: Public Health England

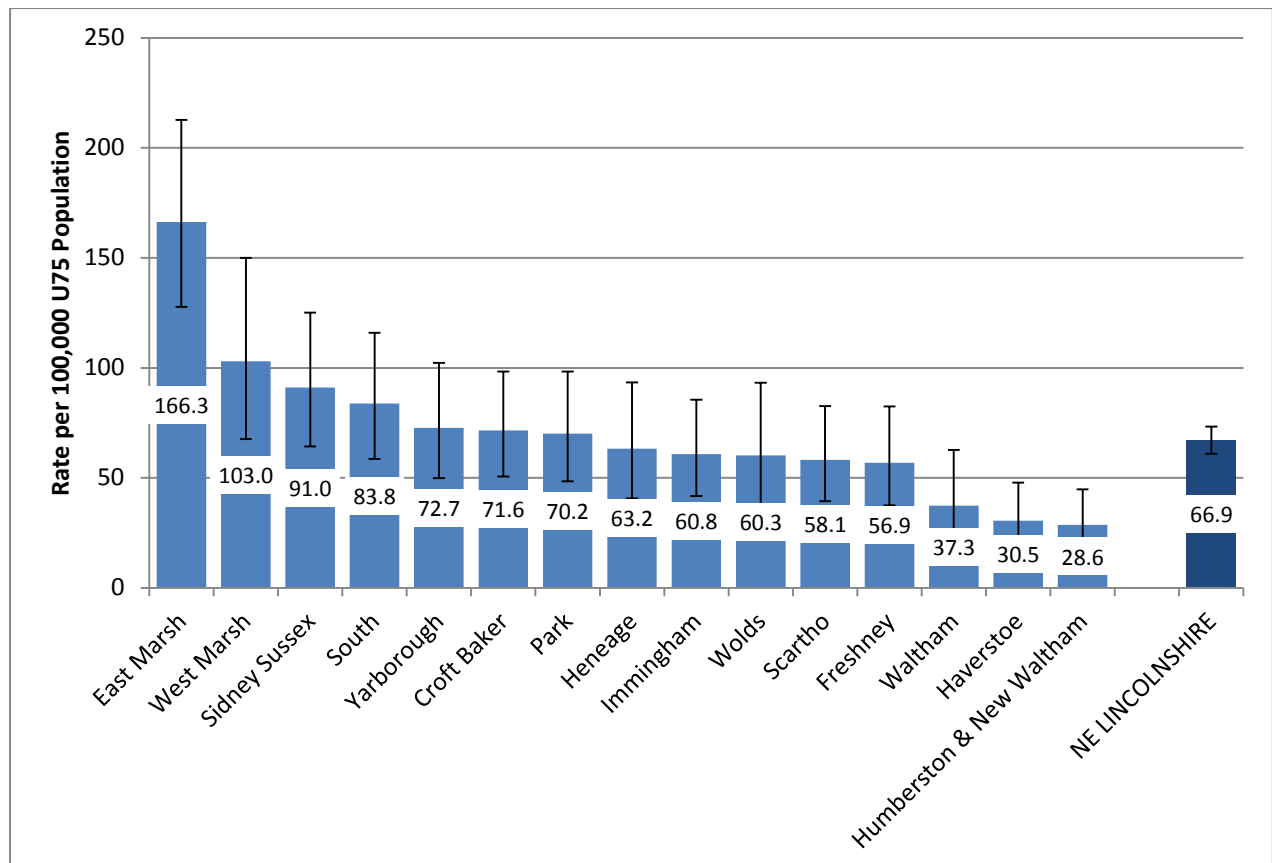
# NE LINCOLNSHIRE JSNA INDICATOR SUMMARY

## NORTH EAST LINCOLNSHIRE

### Electoral Wards

East Marsh ward has by far the highest premature rate for CVD mortality considered preventable, with a rate of 166.3/100,000 it is statistically significantly higher than 13 out of the remaining 14 wards in North East Lincolnshire and is almost 2 and half times that of the North East Lincolnshire rate of 66.9/100,000.

**Figure 5** Under 75 mortality rate from CVD considered preventable, persons, 2010-2014 (5 years pooled), North East Lincolnshire wards



Source: Primary Care Mortality Database (PCMD)

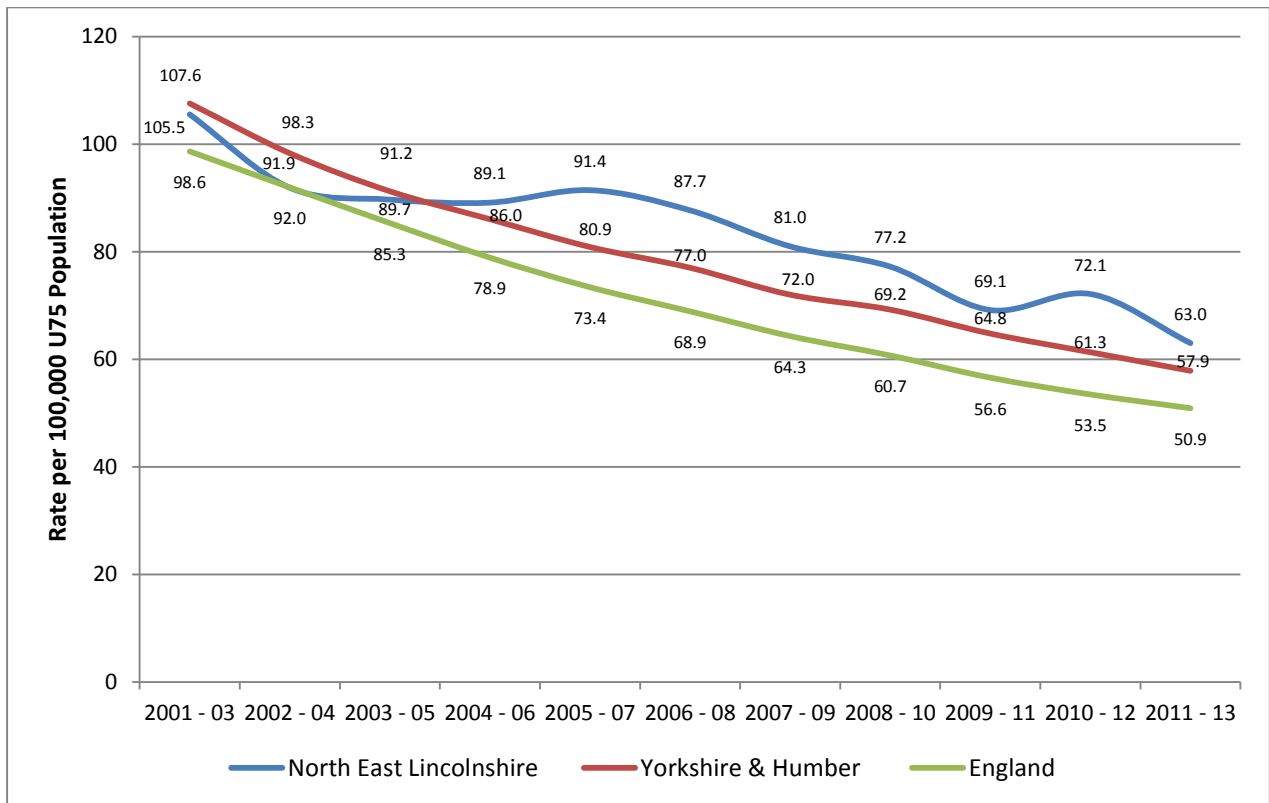
When ordered by IMD10 score, the higher rates are found in the most deprived wards while the lowest rates are in the least deprived wards, the 3 least deprived wards ranked in the lowest 3 whilst the 4 most deprived wards ranked in the top 4.

# NE LINCOLNSHIRE JSNA INDICATOR SUMMARY

## TRENDS

The under 75 rate for CVD mortality considered preventable has decreased locally, regionally and nationally over the time period shown in Figure 6. Although the most recent rate of 63.00/100,000 is the lowest it has been it still remains higher than the Yorkshire and Humber and England.

**Figure 6 Under 75 mortality from CVD, trend for England, Yorkshire and Humber and North East Lincolnshire, rate per 100,000 persons under 75, 3 years pooled**



Source: Public Health England

**Public Data Sources:**

<http://fingertips.phe.org.uk/>