

NE LINCOLNSHIRE JSNA INDICATOR SUMMARY

TITLE:	4.01 INFANT MORTALITY
---------------	------------------------------

SUBTITLE:	Infant deaths under 1 year of age per 1000 live births
------------------	---

Domain:	Preventing Premature Mortality
----------------	---------------------------------------

Frequency of Availability:	Annual
-----------------------------------	---------------

Time Period Of Data Analysis:	2013-2015 (3 years pooled data)
--------------------------------------	--

AVAILABLE COMPARISONS

TYPE	AVAILABLE
National, Regional or Peer Group	Yes
Electoral Ward / NELCCG Practice	No
Neighbourhood	No
Socioeconomic Differences	No
Targets, Trends & Projections	Yes

KEY POINTS

- North East Lincolnshire has the fourth lowest rate of infant mortality out of the 15 local authorities in the Yorkshire and Humber region.
- Although the actual rate has fluctuated, a trend line for North East Lincolnshire shows an overall downwards trend in line with the national and regional rates.

DESCRIPTION

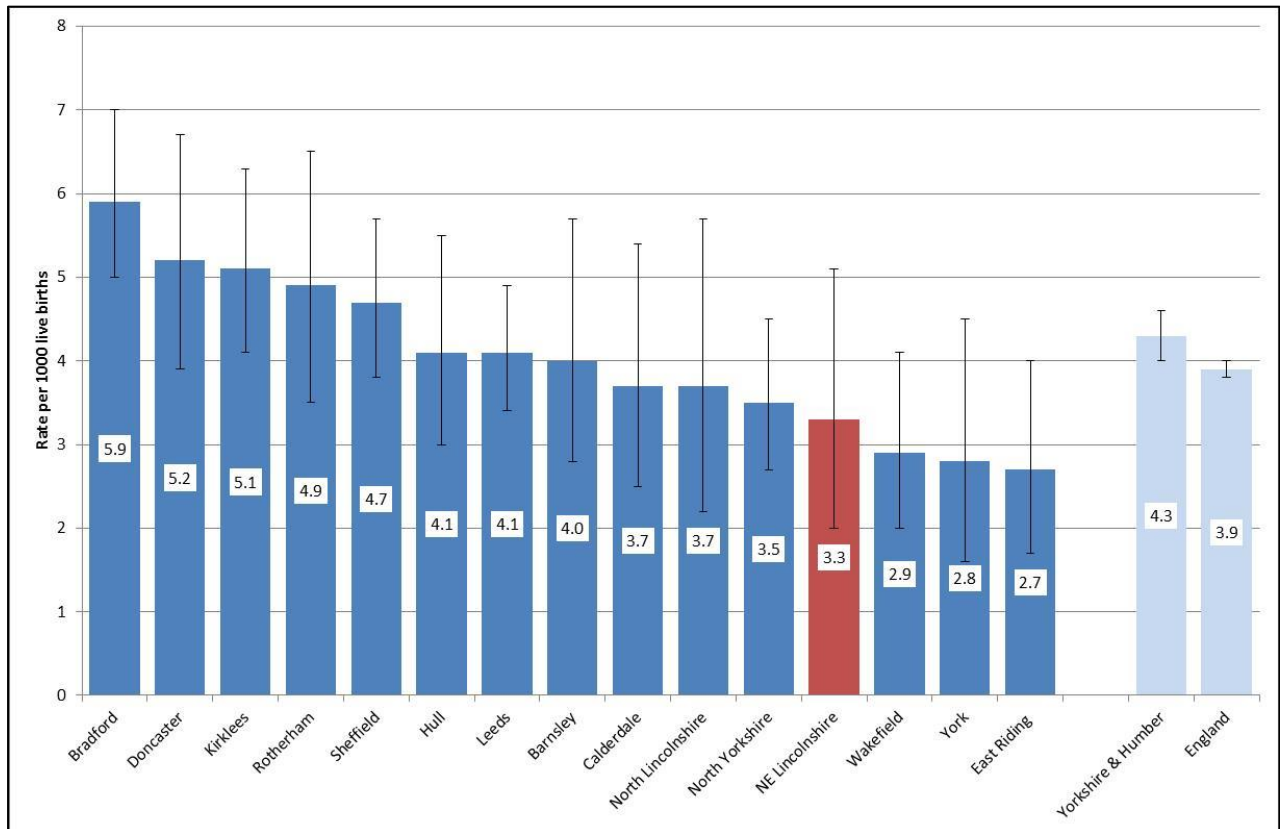
Infant mortality is an indicator of the general health of an entire population. It reflects the relationship between causes of infant mortality and upstream determinants of population health such as economic, social and environmental conditions. Deaths occurring during the first 28 days of life (the neonatal period) in particular, are considered to reflect the health and care of both mother and newborn (Public Health Outcomes Framework).

NE LINCOLNSHIRE JSNA INDICATOR SUMMARY

NATIONAL & REGIONAL

Infant mortality includes all babies who died before their first birthday excluding stillbirths. North East Lincolnshire has the fourth lowest rate of infant mortality out of the 15 local authorities in the Yorkshire and Humber region. With a rate of 3.3 per 1000 live births, North East Lincolnshire has a lower rate than the Yorkshire and Humber region (4.3/1000) and England (3.9/1000), although the differences are not statistically significant, see Figure 1.

Figure 1 Infant deaths under 1 year of age, crude rate per 1000 live births, Yorkshire and Humber region, 2013-2015 (3 years pooled data).



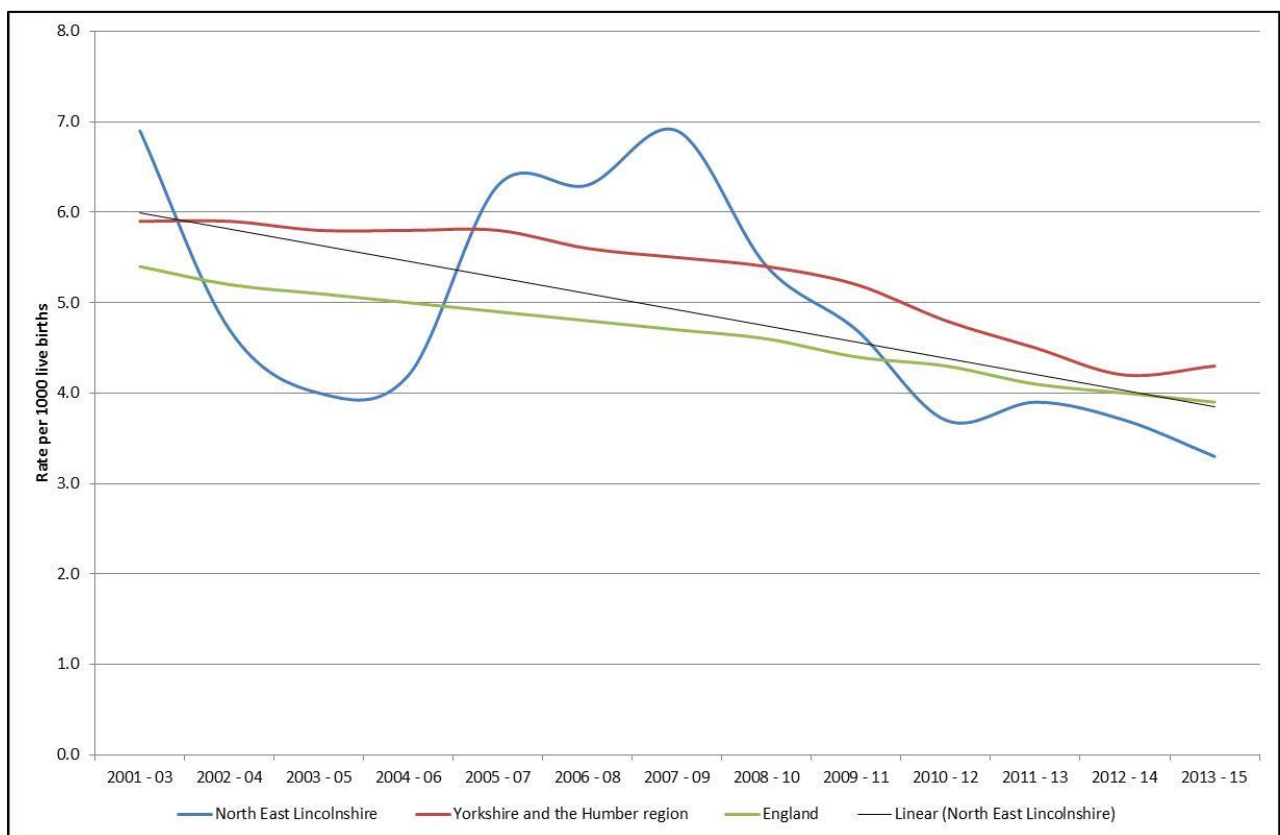
Source: Public Health England

NE LINCOLNSHIRE JSNA INDICATOR SUMMARY

TRENDS

Figure 2 shows the infant mortality trend in North East Lincolnshire compared to the Yorkshire and Humber, and England. The North East Lincolnshire rate fluctuates greatly in comparison to the regional and national rates, however this can be expected due to the small numbers of infant deaths in a small area like North East Lincolnshire. Although the actual rate has fluctuated, a trend line for North East Lincolnshire shows that it is an overall downwards trend in line with the national and regional rates. Local rates varied from 6.9/1000 in 2007-2009 (equivalent to 41 infant deaths over 3 years) to 3.3/1000 in 2013-2015 (equivalent to 19 infant deaths over 3 years).

Figure 2 Infant deaths under 1 year of age, crude rate per 1000 live births, trend, North East Lincolnshire, Yorkshire and Humber and England



Source: Public Health England

Public Data Sources:

<http://fingertips.phe.org.uk/>