

NE LINCOLNSHIRE JSNA INDICATOR SUMMARY

TITLE:	UNDER-18 CONCEPTIONS
---------------	-----------------------------

SUBTITLE:	2.4 Under-18 conception rate per 1000 female population aged 15 to 17 years
------------------	--

Domain:	Health Improvement
----------------	---------------------------

Frequency of Availability:	Quarterly
-----------------------------------	------------------

Time Period Of Data Analysis:	1998 to 2016
--------------------------------------	---------------------

AVAILABLE COMPARISONS

TYPE	AVAILABLE
National, Regional or Peer Group	Yes
Electoral Ward	Yes
Neighbourhood	No
Socioeconomic Differences	No
Targets, Trends & Projections	Yes

KEY POINTS

- The latest under-18 conception rate for North East Lincolnshire for quarter 1 of 2016, is 33.7 conceptions per 1000 females aged 15 to 17 years. This is higher than both the Yorkshire and the Humber (23.5) and England (20.4) rates.
- Since 2010 the annual rate of North East Lincolnshire under-18 conceptions has fallen from 60.2, to 33.7 in quarter 1 of 2016, which is a reduction of 44.0%. This reduction is higher than the reductions achieved for the Yorkshire and the Humber (41.1%) and for England (40.3%).
- Within the Yorkshire and the Humber, North East Lincolnshire has the third highest rolling annual rate of under-18 conceptions for quarter 1 of 2016.
- Compared to all local authorities in England, North East Lincolnshire has the sixth highest rolling annual rate of under-18 conceptions for quarter 1 of 2016.
- There were 101 North East Lincolnshire under-18 conceptions during 2015 which is the lowest annual number since the 1998 baseline.
- Within the Yorkshire and the Humber, North East Lincolnshire has the highest rate of under-16 conceptions for the period 2013-15 (9.6 conceptions per 1000 females aged 13 to 15 years); the local rate being higher than both the Yorkshire and the Humber (5.3) and England (4.3) rates.
- There were 75 North East Lincolnshire under-16 conceptions during the period 2013-15, which is 6 conceptions fewer than during 2012-14, and 42 fewer than during the 2001-03 baseline.

NE LINCOLNSHIRE JSNA INDICATOR SUMMARY

DESCRIPTION

Teenage pregnancy continues to be a significant public health issue, with North East Lincolnshire having a higher rate of under-18 conceptions than both the national and regional averages. Children of teenage mothers are generally at increased risk of poverty, low education attainment, poor housing and poor health, and have lower rates of economic activity in adult life.

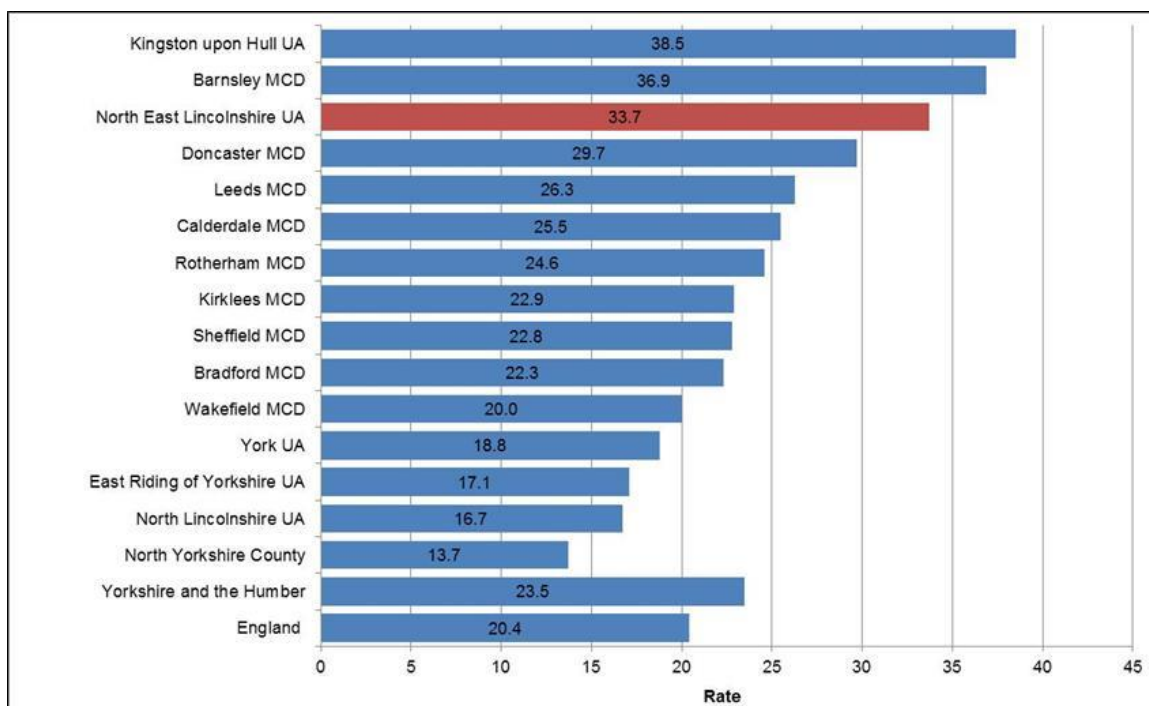
This summary includes the latest available under-18 conception data (2016 quarter 1 figures) which were released on 23 May 2017. These figures released by the Office for National Statistics (ONS), include the number of conceptions and the rate of under-18 conceptions per 1000 female population aged 15 to 17 years. These figures are released quarterly and enable trend analysis over time, and benchmarking with peer authorities.

Conception statistics include pregnancies that result in one (or more) live or still births (a maternity), and pregnancies that result in a legal abortion under the Abortion Act 1967. The statistics do not include miscarriages during the first 23 weeks of gestation or illegal abortions. The date of conception is estimated using recorded gestation for abortions and stillbirths, and assumes 38 weeks gestation for live births.

NATIONAL, REGIONAL OR PEER GROUP

Within the Yorkshire and the Humber, North East Lincolnshire has the third highest rate of under-18 conceptions. The rolling annual under-18 conception rates for all the local authorities within the Yorkshire and the Humber for quarter 1 of 2016 are detailed in Figure 1. Of all local authorities in England, North East Lincolnshire has the sixth highest rolling annual under-18 conception rate for quarter 1 of 2016.

Figure 1 Under-18 conception rates per 1000 female population aged 15-17 years, for England, Yorkshire and the Humber, and the 15 LAs in the Yorkshire and the Humber, 1 year rolling average rates for quarter 1 2016

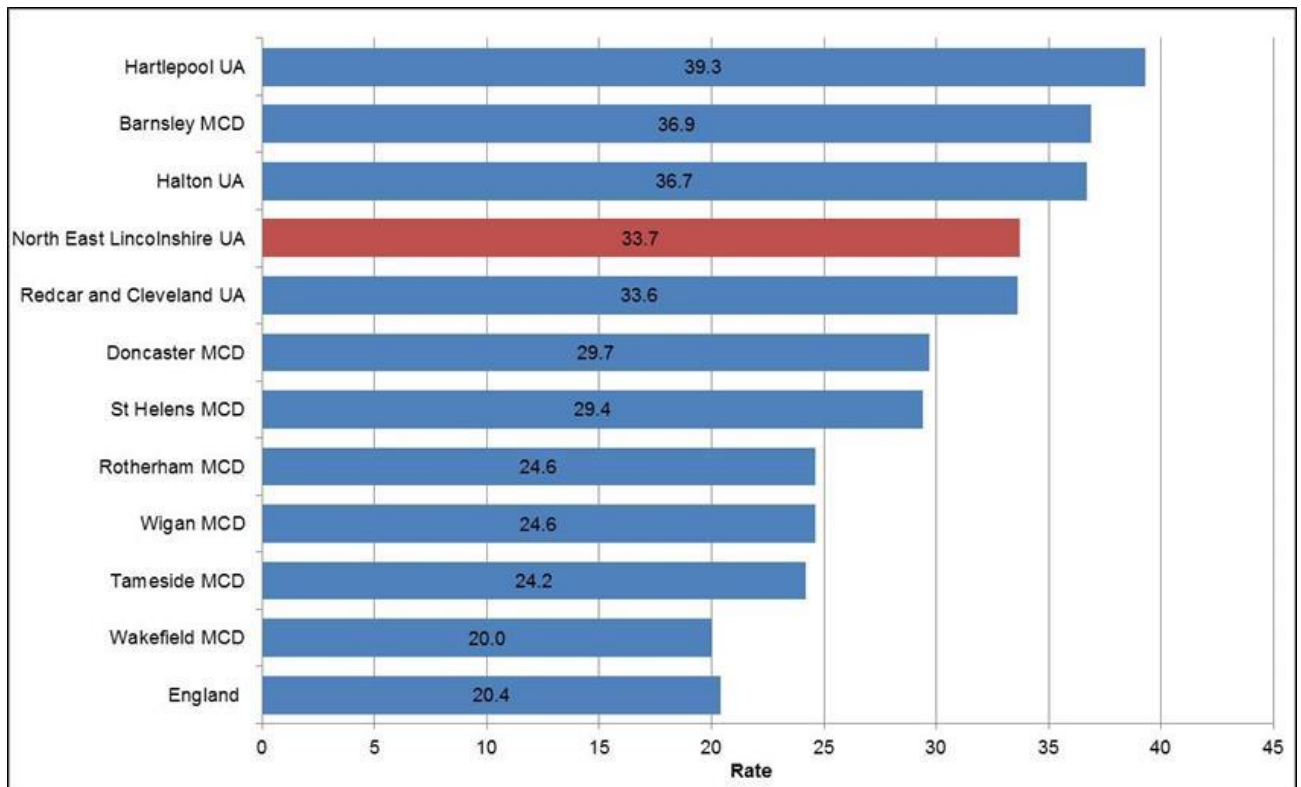


Source: Office for National Statistics (www.ons.gov.uk), © Crown copyright 2017.

NE LINCOLNSHIRE JSNA INDICATOR SUMMARY

Compared to North East Lincolnshire's statistical neighbour authorities, North East Lincolnshire has the fourth highest rate of under-18 conceptions. The rolling annual under-18 conception rates for all these local authorities for quarter 1 of 2016 are detailed in Figure 2.

Figure 2 Under-18 conception rates per 1000 female population aged 15-17 years, for England, North East Lincolnshire UA, and North East Lincolnshire DfE statistical neighbour authorities, rolling annual rates for quarter 1 2016



Source: Office for National Statistics (www.ons.gov.uk), © Crown copyright 2017.

NORTH EAST LINCOLNSHIRE

Electoral Wards

The most recent teenage conception data available at ward level are for the period 2012-2014 (aggregated). There are considerable variations in under-18 conception rates between the 15 North East Lincolnshire wards. Five wards (Waltham, Wolds, Haverstoe, Humberston and New Waltham, and Scartho) have under-18 conception rates which are significantly lower than the North East Lincolnshire rate, and two wards (East Marsh and West Marsh) have under-18 conception rates which are significantly higher than the North East Lincolnshire rate. Wards with the highest rates of conceptions are not necessarily the wards with the highest numbers of conceptions. This geographic pattern appears to confirm the general association between deprivation and under-18 conception rates, as the highest conception rates are in the most deprived areas.

NE LINCOLNSHIRE JSNA INDICATOR SUMMARY

TRENDS, TARGETS & PROJECTIONS

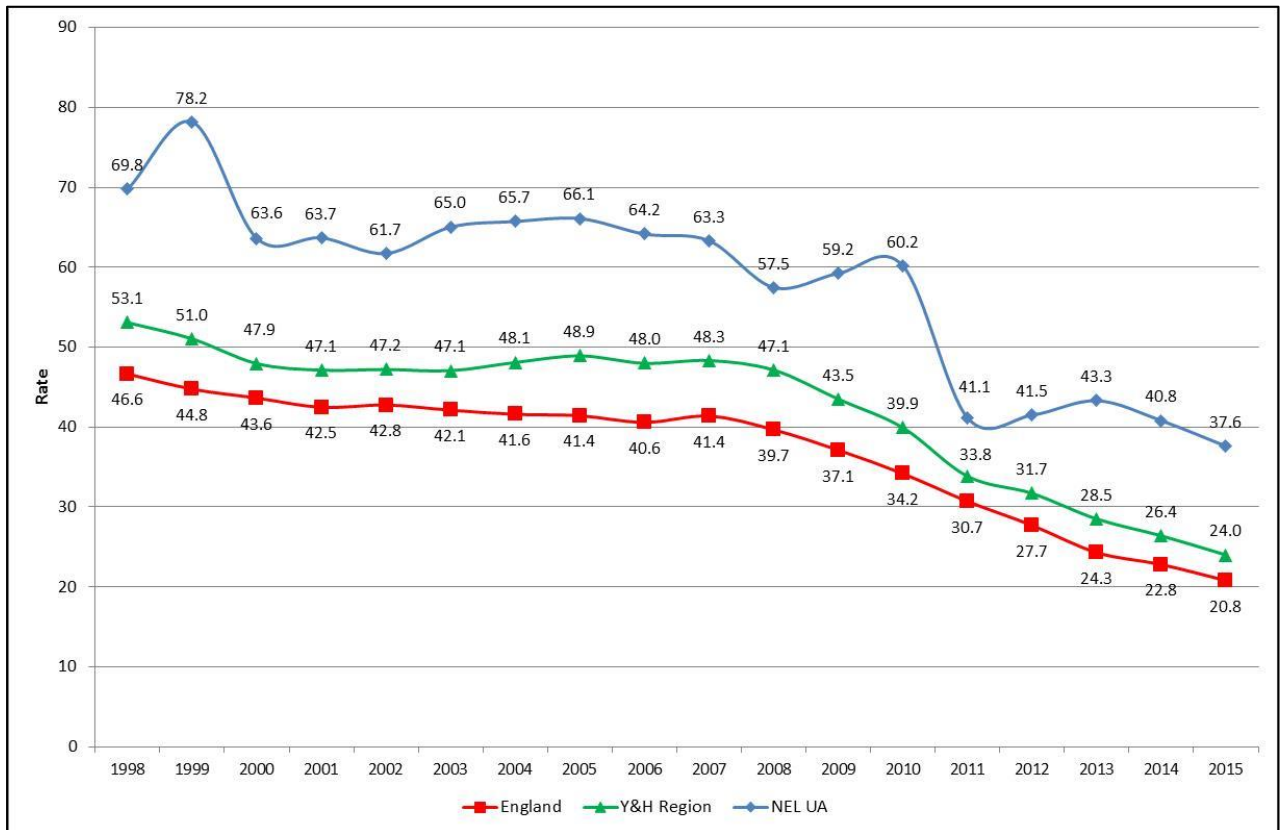
Figure 3 details the progress that has been made regarding reducing the under-18 conception rate since 1998 which was the baseline period for the 1999 Teenage Pregnancy Strategy.

The latest full calendar year rolling annual under-18 conception rate for North East Lincolnshire is for 2015 with a rate 37.6 conceptions per 1000 females aged 15 to 17 years. This was higher than both the Yorkshire and the Humber (24.0) and England (20.8) rates.

The rate of North East Lincolnshire under-18 conceptions has fallen from 69.8 in 1998, to 37.6 in 2015, which is a reduction of 46.1%. This reduction is lower than that achieved for the Yorkshire and the Humber (54.8%) and for England (55.4%).

Between 1998 and 2013 there has been a closing of the absolute gap between the North East Lincolnshire rate, and the Yorkshire and the Humber and England rates, however the relative gap has increased.

Figure 3 Under-18 conception rates per 1000 female population aged 15-17 years, for England, Yorkshire and the Humber, and North East Lincolnshire UA, 1998 to 2015

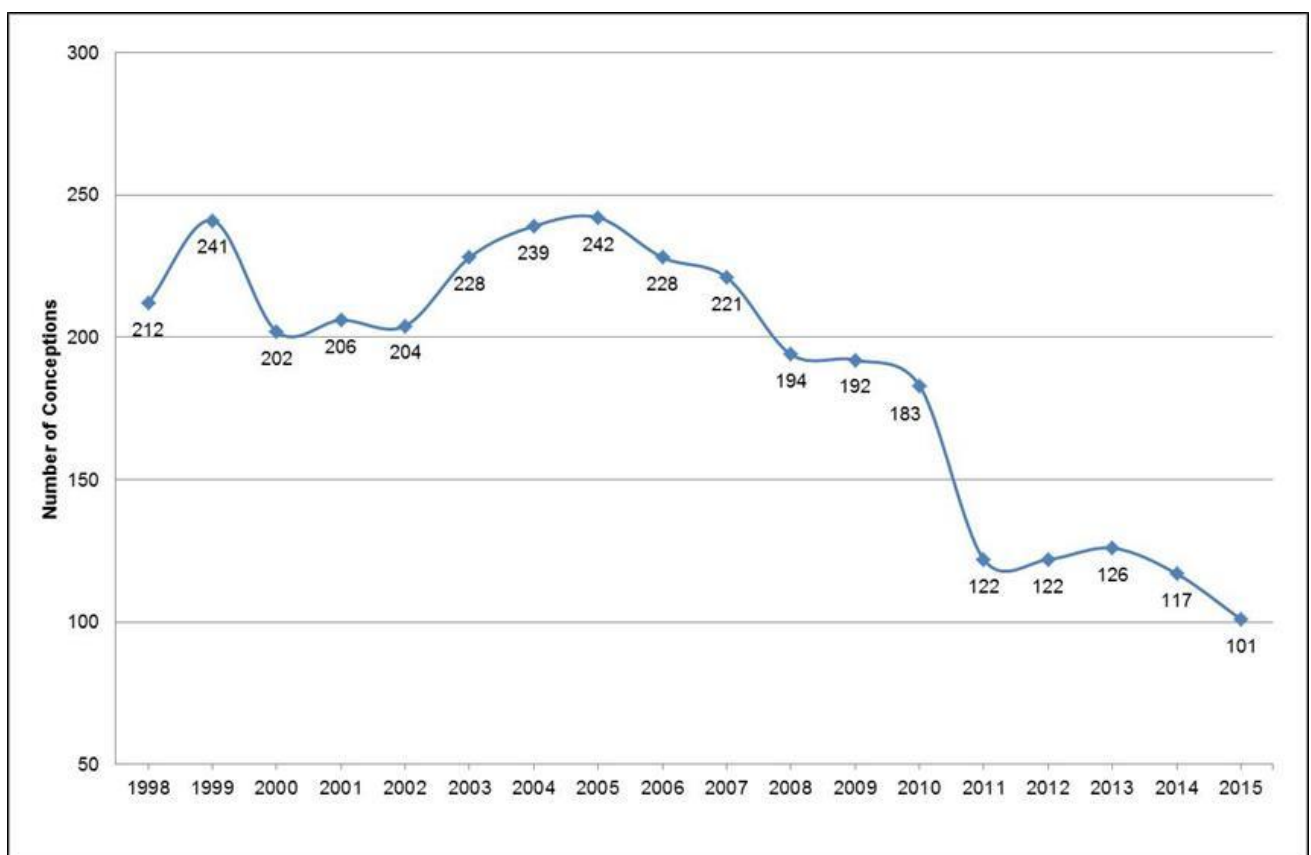


Source: Office for National Statistics (www.ons.gov.uk), © Crown copyright 2016.

NE LINCOLNSHIRE JSNA INDICATOR SUMMARY

Figure 4 shows the annual number of North East Lincolnshire under-18 conceptions since 1998. The number of conceptions decreased year on year from 2005 to 2011. There were 122 under-18 conceptions during 2012 which was the same number as during 2011, and the number then rose by 4 conceptions during 2013 to 126. The number of under-18 conceptions then decreased during 2014 and decreased further to 101 conceptions during 2015, which is 16 fewer conceptions than during 2014, and 111 fewer conceptions than during 1998. 101 conceptions is the lowest annual number of conceptions since the 1998 baseline. During 2015, 40.6% of North East Lincolnshire under-18 conceptions led to an abortion, which is lower than both the Yorkshire and the Humber (43.4%) and England (51.2%) figures. There were 26 conceptions during the first quarter of 2016.

Figure 4 Number of under-18 conceptions for North East Lincolnshire, 1998 to 2015



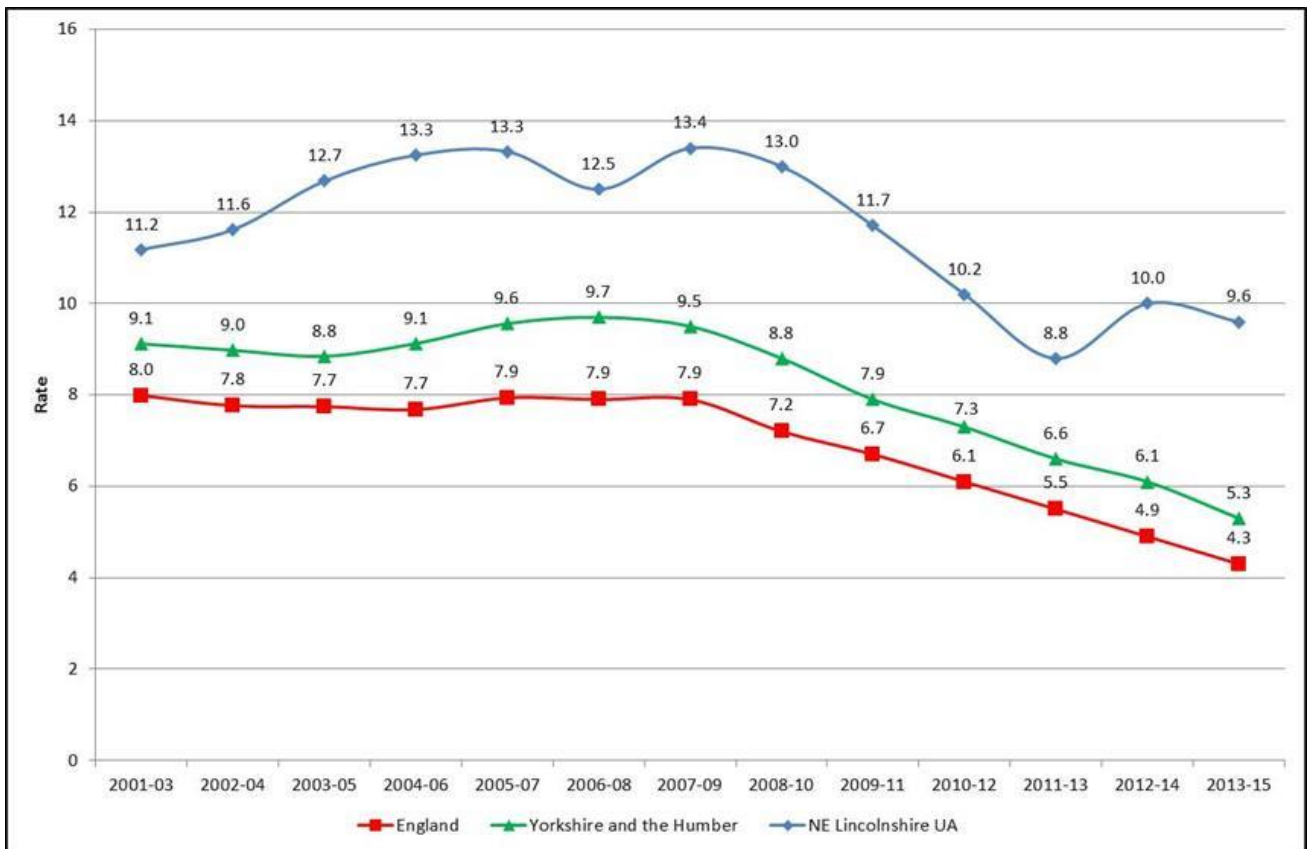
Source: Office for National Statistics (www.ons.gov.uk), © Crown copyright 2016.

NE LINCOLNSHIRE JSNA INDICATOR SUMMARY

Under-16 conception data for 2013-2015 were released on 22 March 2017. These figures published by the Office for National Statistics (ONS) include the number of conceptions, and the rate of under-16 conceptions per 1000 female population aged 13 to 15 years.

Figure 5 shows the under-16 conception rate trend since 2001-03. For the period 2013-15, North East Lincolnshire has an under-16 conception rate of 9.6 conceptions per 1000 female population aged 13-15 years. This is higher than both the Yorkshire and the Humber (5.3) and England (4.3) rates. Year on year reductions of the North East Lincolnshire rate were achieved from 2007-09 to 2011-13, however the rate then increased during 2012-14, before decreasing gain during 2013-15. The reduction achieved for North East Lincolnshire from the 2001-03 baseline is lower than the reductions achieved for the both the Yorkshire and the Humber and the Humber and England, with the local 2013-15 rate more than double that of the England rate.

Figure 5 Under-16 conception rates per 1000 female population aged 13-15 years, for England, Yorkshire and the Humber, and North East Lincolnshire, 2001-03 to 2013-15

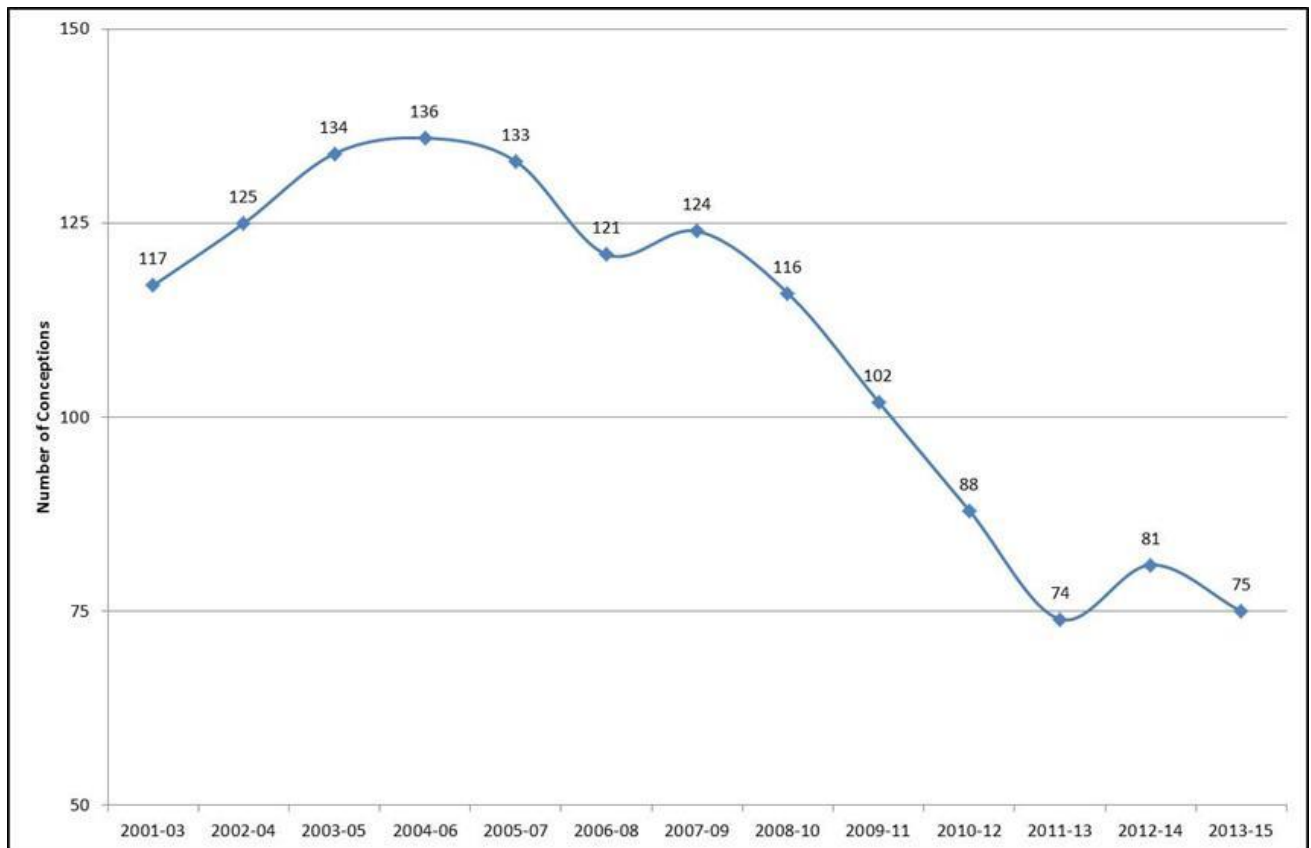


Source: Office for National Statistics (www.ons.gov.uk), © Crown copyright 2017.

NE LINCOLNSHIRE JSNA INDICATOR SUMMARY

Figure 6 shows the number of North East Lincolnshire under-16 conceptions since 2001-03. Year on year reductions were achieved from 2007-09 to 2011-13, however the number of conceptions increased by 7 to 81 conceptions during 2012-14, before falling by 6 conceptions to 75 conceptions during 2013-15. During the period 2013-15, 57.3% of North East Lincolnshire under-16 conceptions led to an abortion, which is higher than the Yorkshire and the Humber (56.3%) figure but lower than the England (61.6%) figure.

Figure 6 Number of North East Lincolnshire UA under-16 conceptions, 2001-03 to 2013-15



Source: Office for National Statistics (www.ons.gov.uk), © Crown copyright 2017.

Public Data Sources:

<http://www.ons.gov.uk/ons/rel/vsob1/conception-statistics--england-and-wales/index.html>