

NE LINCOLNSHIRE JSNA INDICATOR SUMMARY

TITLE:	LOW BIRTH WEIGHT OF TERM BABIES
---------------	--

SUBTITLE:	PHOF 2.1 Percentage of all live births at term with low birth weight
------------------	---

Domain:	Health Improvement
----------------	--------------------

Frequency of Availability:	Annually
-----------------------------------	----------

Time Period Of Data Analysis:	2015 (National & Regional) 2005-2015 (Trend)
--------------------------------------	---

AVAILABLE COMPARISONS

TYPE	AVAILABLE
National, Regional or Peer Group	Yes
Electoral Ward / NELCCG Practice	No
Neighbourhood	No
Socioeconomic Differences	No
Targets, Trends & Projections	Yes

KEY POINTS

- North East Lincolnshire has a lower percentage of live births at term being of low birth weight than both the regional and national rates.
- North East Lincolnshire has the sixth lowest percentage of live births at term being of low birth weight out of the 15 local authorities in the Yorkshire and the Humber region.

DESCRIPTION

Live births with a recorded birth weight under 2500g and a gestational age of at least 37 complete weeks as a percentage of all live births with recorded birth weight and a gestational age of at least 37 complete weeks.

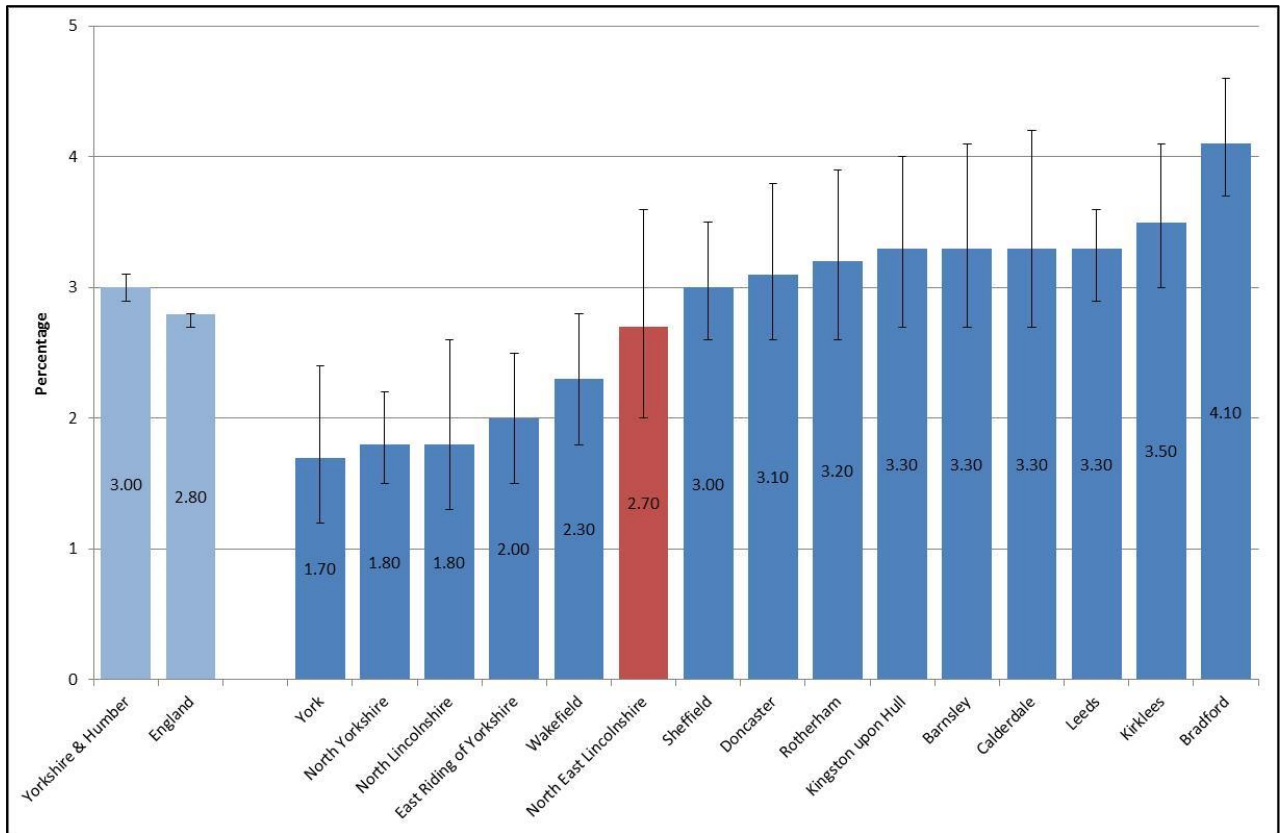
Analysis at Ward and neighbourhood level is not possible due to small numbers.

NATIONAL AND REGIONAL

During 2015, 2.7% of North East Lincolnshire live births at term were of low birth weight. This was the sixth lowest percentage of the 15 local authorities in the Yorkshire and the Humber region. The North East Lincolnshire low birth weight percentage was also lower than both the regional (3.0%) and national (2.8%) percentages, see Figure 1.

NE LINCOLNSHIRE JSNA INDICATOR SUMMARY

Figure 1 Percentage of low birth weight (<2500g) babies born at 37 weeks gestation or after in the Yorkshire and Humber, 2015.



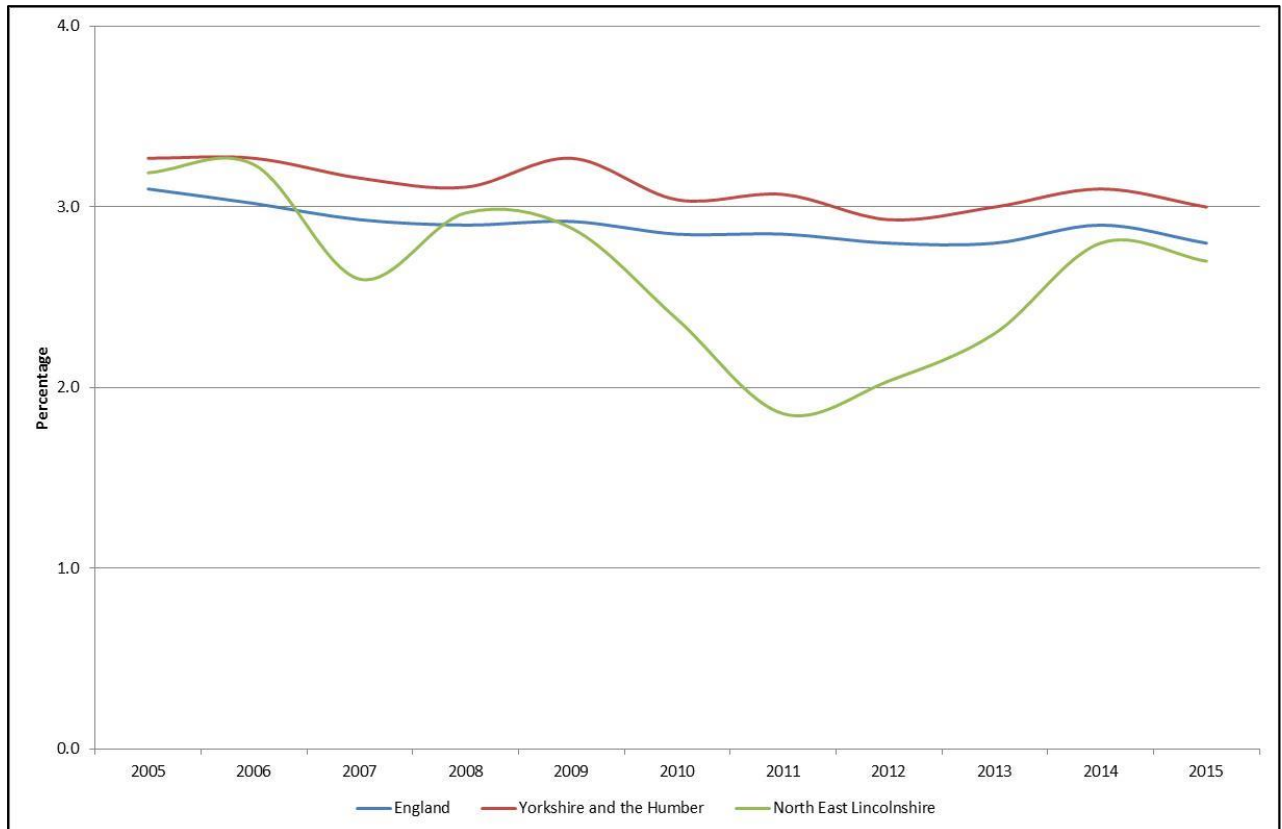
Data Source: Public Health England

NE LINCOLNSHIRE JSNA INDICATOR SUMMARY

TREND

The trend graph below shows that since 2009 the percentage of low birth weight of term babies in North East Lincolnshire has been consistently lower than both the regional and national percentages. It should be noted that numbers are small at local authority level therefore percentages will fluctuate from year to year.

Figure 2 Percentage of low birth weight (<2500g) babies born at 37 weeks gestation or after, Trend, North East Lincolnshire, Yorkshire and Humber and England, 2005 to 2015.



Data Source: Public Health England

Public Data Sources:

<http://www.phoutcomes.info/public-health-outcomes-framework>